

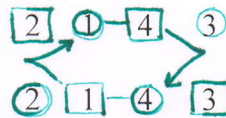
# Far from Home

4 couple longways  
1s and 3s improper

Music: Far from Home

- A1 First and second Women set toward one another, turn single(R) to place; with partner poussette half to change place while third and fourth women do the same (women pushing for the poussette)
- A2 First and fourth men set toward one another, turn single(R) to place; with neighbour poussette half\*\* (men pushing), now 1s are proper and 4s are improper. (order is 2 1 4 3)
- B1 Middle couples dance up or down between the couple above or below and cast to middle place. Middle couples with neighbour (i.e. 1W with 4M, 1M with 4W) set and two hand turn half while end couples two hand turn once round.
- B2 Circle eight half round. All dance a single back then dance forward to change places with partner passing right shoulder ready to begin again. (order is now 3 1 4 2).

\*\* this is quite a stylized poussette as per diagram;  
the men guide the women between 2<sup>nd</sup> or 3rd  
couple as they change sides



Dance devised and music composed by Elizabeth Goossen.

Commissioned by Village Green English Country Dancers.

Village Green was delighted to host the CDSS executive meeting and hope that even though you were all far from home you felt very much at home. November 2011